



# PROTECH AUTOMATION

Automation at it's Peak

## COMPANY PROFILE 2025

### CONTACT INFO



+923344103200



[www.protechautomation.com](http://www.protechautomation.com)



[info@protechautomation.com.pk](mailto:info@protechautomation.com.pk)



Office #56, P-2 Floor, Jeff Heights Gulberg-3 Lahore.

# COMPANY OVERVIEW



## ▶ ABOUT US

We are one of the leading Industrial Automation companies in Pakistan. Our services including design and supply of control panel boards and switchgears. PLC programming and SCADA development. Preparing technical submitting and documentation. Technical support, startup and training. Our products including pressure transducers and PT 100 sensors. Ultrasonic level sensors and flow meters. PLC, HMI and VFDs. SCADA and remote monitoring systems. Fuel transfer pumps and control panel systems, etc

## ▶ OUR HISTORY

Protech Automation, an Engineering & Contracting Firm, was founded in year 2018 by a core team of highly experienced professionals aimed to support the industry and community with solutions and services based on advanced technology from reputed vendors

## ▶ VISION

Our vision is to transform your industry to the smart industry using different remote access devices. It is our ambition to work on new technology and guide our client about the latest technologies. We have a core team of highly experienced professionals aimed to support the industry and community with solutions and services based on advanced technology from reputed vendors.



# CORE VALUES



◆◆ Innovation-driven solutions

◆◆ Uncompromised quality

◆◆ Customer-first approach

◆◆ Integrity and honesty

◆◆ Expert Consultation

◆◆ Collaborative teamwork

◆◆ Continuous improvement

◆◆ Sustainable practices

◆◆ Value-oriented delivery

◆◆ Safety-focused operations

◆◆ Agile and adaptive mindset

◆◆ Goodwill

# ENGINEERING SERVICES

## ► Automation Of Plants

We provide industrial automation solutions that enhance plant efficiency, safety, and productivity by integrating technologies such as PLCs, SCADA systems, and VFDs. Our services are designed to monitor, control, and optimize industrial processes with minimal human intervention



**PLC & HMI  
Programming**



**HMI & SCADA  
Designing**



**Panel Designing &  
Troubleshooting**



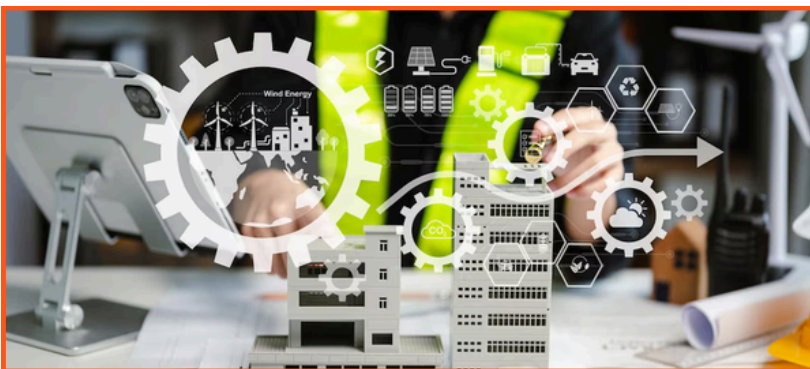
**Industrial Process  
Automation**



**VFD Installation &  
Configuration**

## ► Building Management System

"We deliver advanced Building Management System (BMS) solutions designed to enhance operational efficiency, occupant comfort, and facility safety. By seamlessly integrating HVAC, lighting, security, and other essential building systems, our BMS platforms enable centralized monitoring, intelligent control, and optimized performance with minimal manual intervention



**Energy Optimization  
& Monitoring**



**HVAC & Lighting  
Control**



**Access Control &  
Security Systems**



**Predictive Maintenance  
& Analytics**



**Lifts, Elevators System**



## ► Installation of Solar Panels

We offer comprehensive solar energy solutions focused on the efficient installation and intelligent management of solar power systems. Our services are designed to optimize energy generation, reduce operational costs, and support sustainability goals through advanced monitoring, performance analysis, and minimal maintenance requirements.



We provide comprehensive solar solutions

- Residential Solutions
- Commercial Solutions
- Utility Solutions



**Solar System Design & Installation**



**Solar Monitoring & Maintenance**



**Energy Storage Solutions**



**Smart Energy Management**



**Synchronization of solar with Generator**



**Solar Panel Cleaning Solutions**

## ► Industrial Boiler's

We design and manufacture highly customized industrial boiler systems engineered to meet the specific thermal and operational demands of diverse industrial sectors. Our solutions prioritize energy efficiency, safety, and long-term reliability, incorporating advanced control technologies and precision engineering. Each boiler is tailored to optimize process performance, reduce operational costs, and ensure compliance with the highest industry standards—empowering facilities with robust and intelligent heat generation solutions.



We Manufacture these boilers

- Gas Fired Boiler
- Coal Fire Boiler
- Fluidized Bed Boiler
- Waste Heat Boiler
- Vertical Boiler
- Gas Fired Oil Heater
- Coal Oil Heater
- Vertical Gas Oil Heater



**Boiler Design & Manufacturing**



**Boiler Automation & Control Systems**



**Boiler Installation & Commissioning**



**Energy Optimization & Heat Recovery Systems**



**Boiler Maintenance & Support**



**Remote Monitoring & Smart Diagnostics**

## FIRE ALARM SYSTEM

Protech Automation specializes in the design, integration, and deployment of advanced fire alarm systems, engineered to deliver precise detection, rapid notification, and uncompromised protection for industrial and commercial facilities. Our solutions are tailored to meet the specific safety and regulatory requirements of each site, incorporating state-of-the-art detection technologies, intelligent control panels, and fully integrated alarm and monitoring components. With a strong emphasis on reliability, compliance, and system scalability, our expert team ensures seamless implementation and rigorous testing—providing clients with a robust fire safety infrastructure that protects both people and assets.



**Fire Alarm System Design & Installation**



**Fire Detection & Monitoring**



**System Maintenance & Testing**



**Integrated Fire Safety Solutions**



**Emergency Voice Evacuation Systems**



**Fire Alarm System Retrofit & Upgrades**



**Fire Alarm System Compliance Audits**

## EMERGENCY LIGHTING SYSTEM

Protech Automation delivers reliable and energy-efficient emergency lighting solutions, integrating advanced LED and battery backup technologies. Our systems feature centralized control panels, addressable self-contained luminaires, and smart signage, all connected via extra-low voltage cabling for easy installation and minimal maintenance. Designed for industrial and commercial environments, our solutions ensure safety, compliance, and dependable performance during critical situations.



**System Design & Installation**



**Energy-Efficient LED Lighting**



**Battery Backup Solutions**



**Smart Signage & Control**



**Compliance & Certification**



**Maintenance & Inspection**



## ► Industry 4.0

At Protech Automation, we are at the forefront of the Industry 4.0 revolution, delivering intelligent and connected automation solutions that convert traditional industries into smart, data-driven ecosystems. By integrating modern technologies like IoT, automation, big data analytics, and cloud computing, we help our clients optimize processes, increase efficiency, and gain valuable real-time insights.

Our end-to-end capabilities include:

- Design & Engineering of Smart Systems
- Installation & Commissioning of Intelligent Devices
- Integration with SCADA, PLC, and MES Systems
- Cybersecurity Measures for Industrial Networks

By embracing Industry 4.0, Protech Automation empowers organizations to stay competitive in a rapidly evolving industrial landscape, paving the way for smarter, safer, and more sustainable operations.



**REMOTE MONITORING  
& CONTROL**



**PREDICTIVE  
MAINTENANCE**



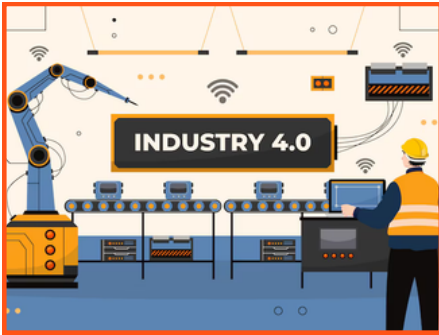
**SYSTEM INTEGRATION**



**DIGITAL  
TRANSFORMATION**



**Cloud Computing**



## ► Energy Management System

At Protech Automation, our Energy Logic – Energy Management System (EMS) provides industries with an intelligent, plug-and-play platform designed to acquire, analyze, and act on energy data in real-time. By simplifying energy monitoring and reporting, we help clients optimize consumption, reduce energy waste, and improve cost-efficiency across their operations.

Our EMS empowers industries to reduce their environmental impact while maximizing equipment reliability and operational uptime. With user-friendly dashboards and real-time analytics, our clients are equipped to make smarter decisions and manage energy usage more strategically.



**Real-time Energy  
Data Monitoring**



**Integration with  
SCADA and Existing  
Control Systems**



**Alarm & Demand  
Management**



**Advanced Data Analytics**



**Utility Bill Verification &  
Exception Reporting**



**Utility Bill Verification  
& Exception Reporting**



## ► Industrial Storage Tank

Protech Automation provides specialized solutions for industrial storage tank automation, monitoring, and maintenance, combining advanced engineering with intelligent control systems. Our expertise ensures the safe and efficient operation of storage infrastructure by enabling real-time data acquisition, predictive diagnostics, and automated control of critical parameters such as level, pressure, and temperature. By proactively addressing risks such as leakage, overfill, and structural degradation, we help clients maintain operational reliability, ensure regulatory compliance, and safeguard valuable assets across industrial environments.



**Storage Tank Design  
& Manufacturing**



**Installation &  
Commissioning**

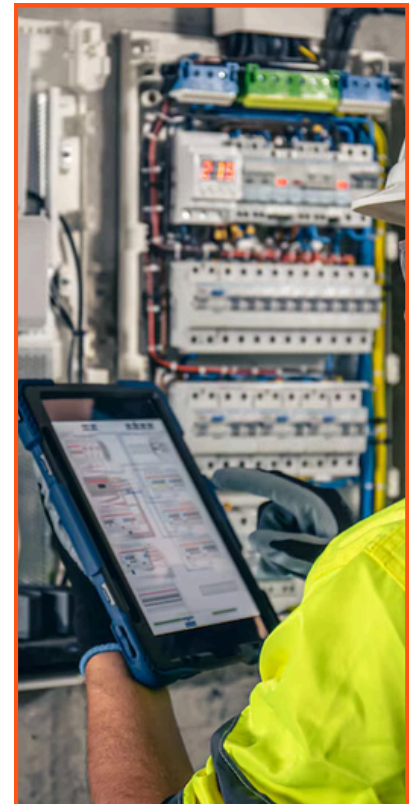
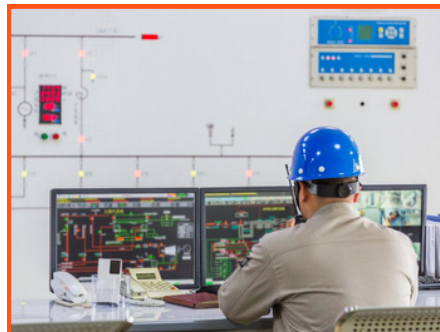


**Automation &  
Control Systems**



## ► INDUSTRIAL ELECTRIC PANEL DESIGN

Protech Automation offers end-to-end solutions for the design, engineering, and testing of High Tension (HT) and Low Tension (LT) electrical panels, tailored to meet the specific operational and safety requirements of each client. Our team of highly skilled experts ensures precision in panel layout, component selection, and system integration, delivering panels that guarantee optimal performance, durability, and regulatory compliance. From conceptual design to final testing, we uphold the highest standards in electrical engineering to support reliable power distribution, seamless automation, and efficient energy management across industrial applications.





# TRADING SERVICES

At Protech Automation, we proudly serve as a trusted distributor and sourcing partner of high-quality industrial automation components. We offer an extensive portfolio of products from globally recognized brands, ensuring reliability, performance, and long-term value for a wide range of industries. Our trading division is categorized into the following core sectors:

## ► Control Equipment

### • PLC & HMI

We deal in these PLC & HMI brands.

- |                 |             |
|-----------------|-------------|
| ◆ Siemens       | ◆ Delta     |
| ◆ Allen Bradley | ◆ Omron     |
| ◆ ABB           | ◆ Schneider |
| ◆ Mitsubishi    | ◆ GE        |
| ◆ Fatek         | ◆ Haiwell   |



### • VFD (Variable Frequency Drive)

We deal in these VFD brands.

- |                 |                 |
|-----------------|-----------------|
| ◆ Siemens       | ◆ Delta         |
| ◆ Danfoss       | ◆ INVT          |
| ◆ Yaskawa       | ◆ Schneider     |
| ◆ Mitsubishi    | ◆ LS            |
| ◆ Allen Bradley | ◆ Fuji Electric |



### • Soft Starters & Overload Relays

We deal in these brands.

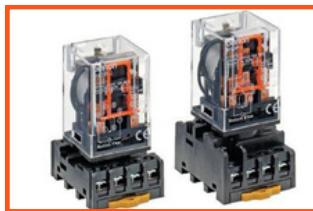
- |                 |             |
|-----------------|-------------|
| ◆ Siemens       | ◆ Delta     |
| ◆ Danfoss       | ◆ Schneider |
| ◆ L&T           | ◆ CHINT     |
| ◆ ABB           |             |
| ◆ Allen Bradley |             |



## • Relay Modules & Contactors

We deal in these brands of Relay & Contactor.

- |                 |               |
|-----------------|---------------|
| ◆ Siemens       | ◆ Delta       |
| ◆ Allen Bradley | ◆ LS Electric |
| ◆ ABB           | ◆ Schneider   |
| ◆ Finder        | ◆ CHINT       |
| ◆ WAGO          | ◆ Eaton       |



## • Power Supplies & Signal Converters

We deal in these Power Supplies & Signal Converters brands.

- |                 |              |
|-----------------|--------------|
| ◆ Siemens       | ◆ Delta      |
| ◆ Phoenix       | ◆ Weidmüller |
| ◆ Mean Well     | ◆ Schneider  |
| ◆ WAGO          | ◆ PULS       |
| ◆ Allen Bradley | ◆ M-System   |



## ► INSTRUMENTATION

### • Temperature Sensors

We deal in these brands of RTDs, Thermocouples (J, K, PT100, etc.).

- |            |             |
|------------|-------------|
| ◆ Siemens  | ◆ Honeywell |
| ◆ WIKA     | ◆ Jumo      |
| ◆ Yokogawa | ◆ (E+H)     |
| ◆ ABB      | ◆ Omega     |



### • Pressure Transmitters & Gauges

We deal in these brands of Absolute, gauge, and differential Pressure transmitters.

- |             |            |
|-------------|------------|
| ◆ Siemens   | ◆ Danfoss  |
| ◆ Autonics  | ◆ Yokogawa |
| ◆ Festo     | ◆ (E+H)    |
| ◆ Tempens   | ◆ SMAR     |
| ◆ Honeywell | ◆ Ashcroft |



### • Flow Meters

We deal in these brands of Electromagnetic, Ultrasonic, Vortex & Turbine type flowmeters.

- |                 |           |
|-----------------|-----------|
| ◆ Siemens       | ◆ KROHNE  |
| ◆ Yokogawa      | ◆ Omega   |
| ◆ (E+H)         | ◆ Emerson |
| ◆ ABB           | ◆ Toshbro |
| ◆ Allen Bradley | ◆ GE      |





## • Level Sensors

We deal in these brands of Ultrasonic, Radar, Float & Capacitance Level Sensors.

- |                 |          |
|-----------------|----------|
| ◆ Siemens       | ◆ KROHNE |
| ◆ Allen Bradley | ◆ Gems   |
| ◆ ABB           | ◆ VEGA   |
| ◆ Honeywell     | ◆ IFM    |
| ◆ (E+H)         |          |



## • Analytical Instruments

We deal in these brands of pH, ORP, Conductivity, DO meters.

- |                 |          |
|-----------------|----------|
| ◆ Siemens       | ◆ Knick  |
| ◆ Yokogawa      | ◆ (E+H)  |
| ◆ ABB           | ◆ Supmea |
| ◆ Emerson       |          |
| ◆ Allen Bradley |          |

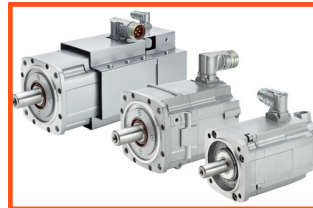


## ► Actuators

### • Servo & Stepper Motors

We deal in these brands of Servo & Stepper Motors

- |           |            |
|-----------|------------|
| ◆ Siemens | ◆ Delta    |
| ◆ Fanuc   | ◆ Jumo     |
| ◆ Yaskawa | ◆ Beckhoff |
| ◆ ABB     | ◆ Omron    |



### • Linear & Rotary Actuators

We deal in these brands of Linear & Rotary Actuators.

- |                 |            |
|-----------------|------------|
| ◆ Bosch Rexroth | ◆ Festo    |
| ◆ SMC           | ◆ Burkert  |
| ◆ Thomson       | ◆ ASCO     |
| ◆ Tempens       | ◆ SMAR     |
| ◆ Norgren       | ◆ Ashcroft |



### • Pneumatic & Hydraulic Actuators

We deal in these brands of Pneumatic & Hydraulic Actuators

- |                 |           |
|-----------------|-----------|
| ◆ Festo         | ◆ KROHNE  |
| ◆ SMC           | ◆ Burkert |
| ◆ Bosch Rexroth | ◆ SMAR    |
| ◆ Norgren       | ◆ Tempens |
| ◆ Rotork        | ◆ Omron   |



# OUR BRANDS

## IMPORTER

 <b>Endress+Hauser</b> <small>People for Process Automation</small>				 <small>Festo Lernzentrum Saar</small>
 <small>SENSORS &amp; CONTROLLERS</small>				
				
 <small>SWITCH TO THE FUTURE</small>				

## STOCKIST





# PROTECH AUTOMATION

Automation at It's Peak



## CONTACT INFO

+923344103200

[www.protechautomation.com](http://www.protechautomation.com)

[info@protechautomation.com.pk](mailto:info@protechautomation.com.pk)

Office #56, P-2 Floor, Jeff Heights Gulberg-3 Lahore.

